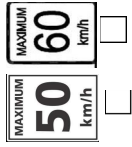


Regulated



Posted Speed



Figure 4: SLAT 2 lane Roadway



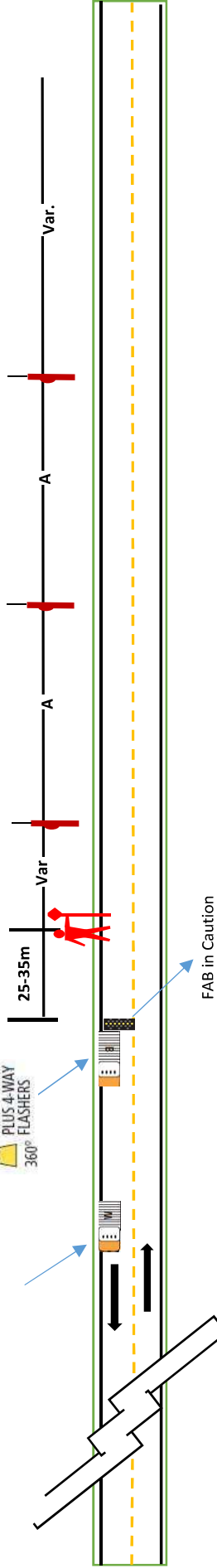
R-004-100



Buffer Vehicle



Work Vehicle



1. Corresponding traffic control devices will be erected for traffic traveling in the opposite direction.

Device Spacing (m)	Regulatory Speed Limit before Work Begins (km/h)								
	≤ 50	60	70	80	90	100	110	120	
Construction Sign Spacing	A	40	60	80	100	150	200	200	
Buffer Space	B	30	40	60	80	110	140	170	200

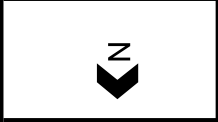
**LEGEND:**

- Sign Location
- Class One Barricade
- Closure Area
- No Parking Area
- Pedestrian Detour Route
- Delineator
- Traffic Control Person

**SEALING**

**PAVING MAINTENANCE**  
9746 198B street,

- Notes
1. Date: TBO
  2. Hours of Operation: TBO
  3. Duration: TBO

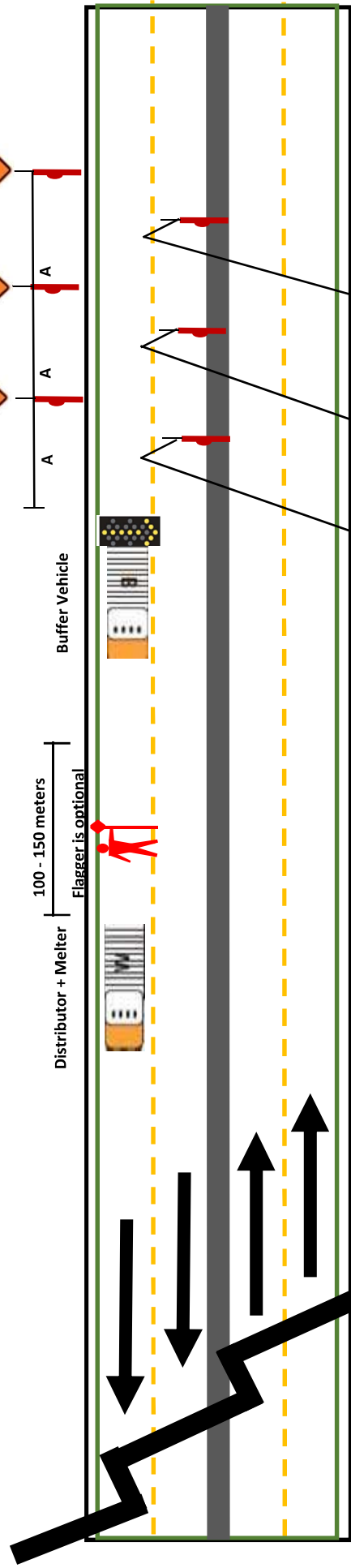
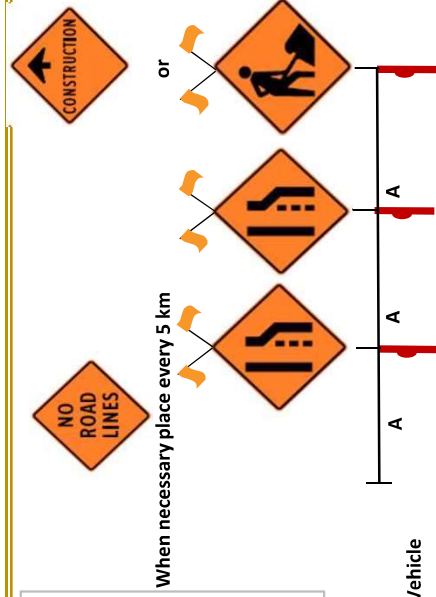


**Sealtec Industries**  
9746 198B Street Langley, BC  
Ph. 604-881-4409

*Posted Speed*

MAXIMUM 50 km/h	MAXIMUM 60 km/h	MAXIMUM 70 km/h	MAXIMUM 80 km/h	MAXIMUM 90 km/h	MAXIMUM 100 km/h	MAXIMUM 110 km/h
<input type="checkbox"/>	<input type="checkbox"/>	<input type="checkbox"/>	<input type="checkbox"/>	<input type="checkbox"/>	<input type="checkbox"/>	<input type="checkbox"/>

Figure 1: Left Lane Closure Operation with no regulated speed on a 4 lane Highway.  
 The work zone length is 4 km.  
 A downstream flagger is optional.  
 No road lines may or may not be required.



1. Corresponding traffic control devices will be erected for traffic traveling in the opposite direction.
2. If the medium permits another set of signs would be set up staggered from the first set by approximately 80 meters

Device Spacing (m)	Regulatory Speed Limit before Work Begins (km/h)
≤ 50	60 70 80 90 100 110 120
Construction Sign Spacing	A 40 60 80 100 150 200 200
Buffer Space	B 30 40 60 80 110 140 170 200

When necessary place every 5 km

**LEGEND:**

- Sign Location
- Class One Barricade
- Closure Area
- No Parking Area
- Pedestrian Detour Route
- Delineator
- Traffic Control Person

**SEALTEC**

**PAVEMENT MAINTENANCE**  
 9746 1988 Street,  
 Langley, BC V1M 2X5

**Notes:**

1. Date: TBO
2. Hours of Operation: TBO
3. Duration: TBO

Traffic control Plan for a Right Lane Closure operation

**Sealtec Industries**  
 9746 1988 Street Langley, BC.  
 Ph. 604 881 4409

Posted Speed

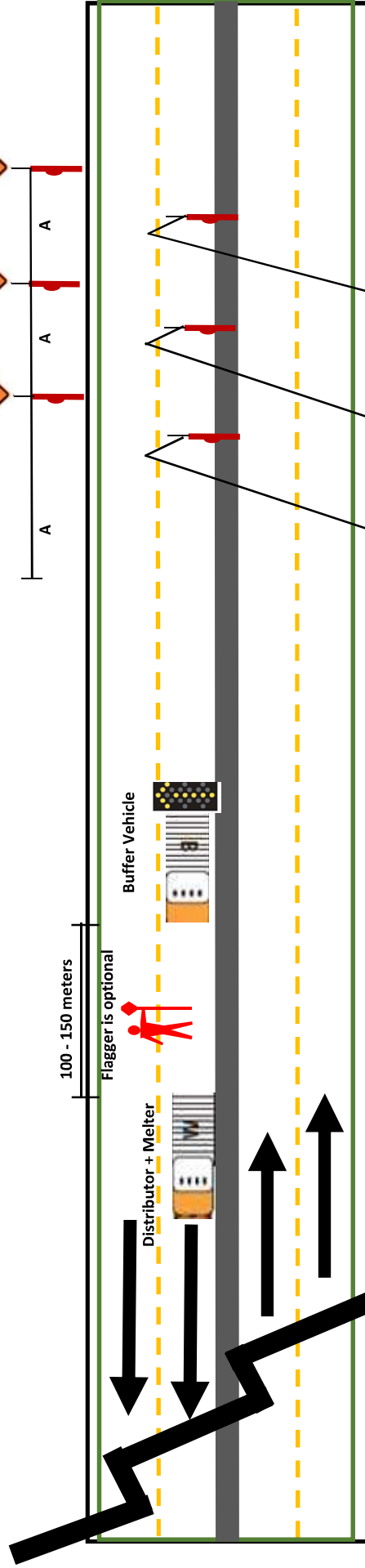
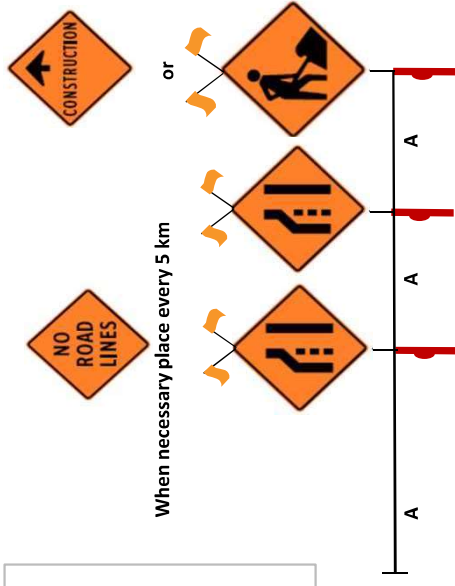
MAXIMUM 50 km/h	MAXIMUM 60 km/h	MAXIMUM 70 km/h	MAXIMUM 80 km/h	MAXIMUM 90 km/h	MAXIMUM 100 km/h	MAXIMUM 110 km/h
<input type="checkbox"/>	<input type="checkbox"/>	<input type="checkbox"/>	<input type="checkbox"/>	<input type="checkbox"/>	<input type="checkbox"/>	<input type="checkbox"/>

Figure 1: Left Lane Closure Operation with no regulated speed on a 4 lane Highway.

The work zone length is 4 km.

A downstream flagger is optional.

No road lines may or may not be required.



1. Corresponding traffic control devices will be erected for traffic traveling in the opposite direction.
2. If the medium permits another set of signs would be set up staggered from the first set by approximately 80 meters

Device Spacing (m)	Regulatory Speed Limit before Work Begins (km/h)						
Construction Sign Spacing	A	40	60	80	100	150	200
Buffer Space	B	30	40	60	80	110	200

**LEGEND:**

- Sign Location
- Class One Barricade
- Closure Area
- No Parking Area
- Pedestrian Detour Route
- Delinctor
- Traffic Control Person

**SEALTEC**  
**PAVEMENT MAINTENANCE**  
 9746 198B Street,  
 Langley, BC V1M 2X5

- Notes**
1. Date: TBO
  2. Hours of Operation: TBO
  3. Duration: TBO

Traffic control Plan for a Left Lane Closure operation

**Sealtec Industries**  
 9746 198B Street Langley, BC.  
 Ph. 604 881 4409

